

# Medical case

## Universal Implant Componentry

Doctor Steven A. Brisman presents a often case where a patient has several diferent implants



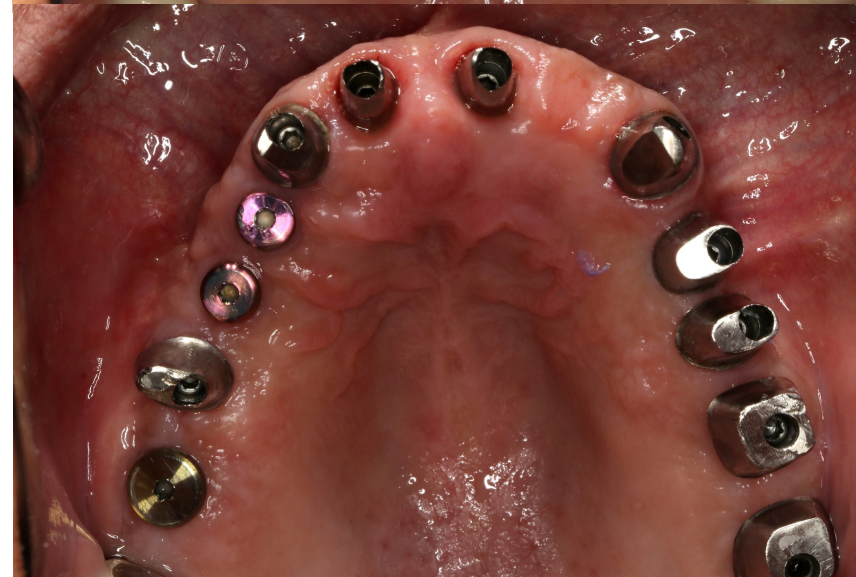


**Dr. Steven A. Brisman**  
United States (USA)

## CASE PRESENTATION

This 65-year-old patient presents to the dental clinic with chief concerns of ill feeling restorations, inability to clean and excess cement secondary to the cementable restorations.

Upon examination, the patient presents with 12 maxillary implants of 5 different manufactures and connection styles. Patient does not desire a cement retained restoration but rather requests screw retained.



Initial situation



## A challenging case ● ● ●

### INTRO:

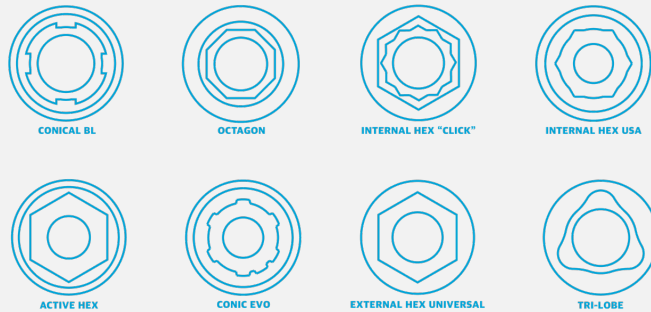
In today's aging population it is often common for patients to present having a myriad of implant systems and connection types that were successfully restored over many years. Within the course of one's dental life, oral conditions change and evolve. Consequently, patients often require both the removal of failed implants, and placement of additional implants.

This creates a patient need to rehabilitate and restore a dental quadrant or arch with a **SINGLE** restoration that possesses several different implant systems. The restorative dentist is now faced with a very real, yet complex treatment plan. Are we able to create screw retained implant restorations, preferably with angulated screw channels, using various first party componentry (OEM) within the same restoration?

**This is why DESS®!**

DESS® Resources that make challenges become easier

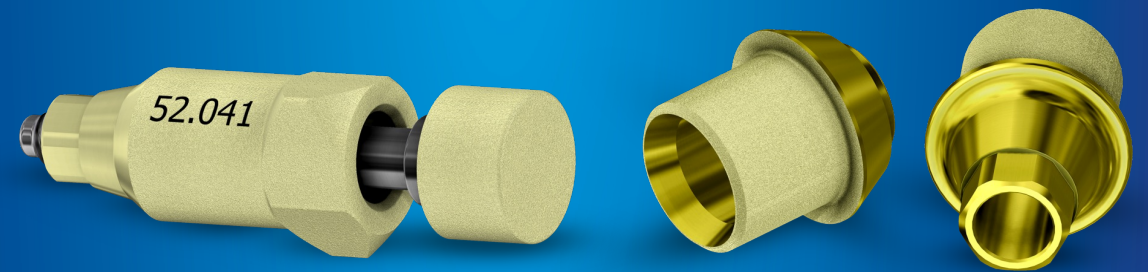
## ✓ +30 COMPATIBILITIES



## DESS® LIBRARIES

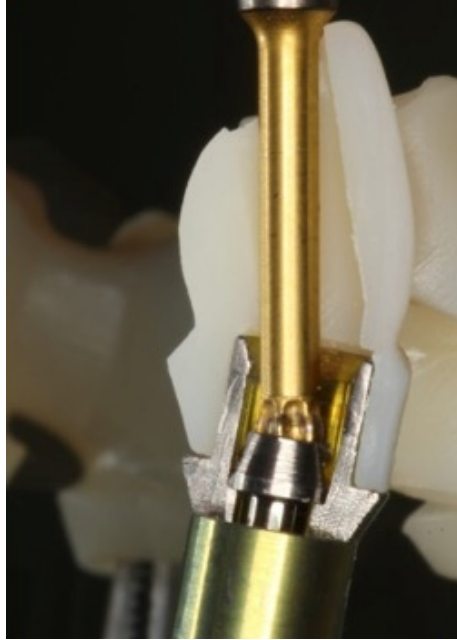
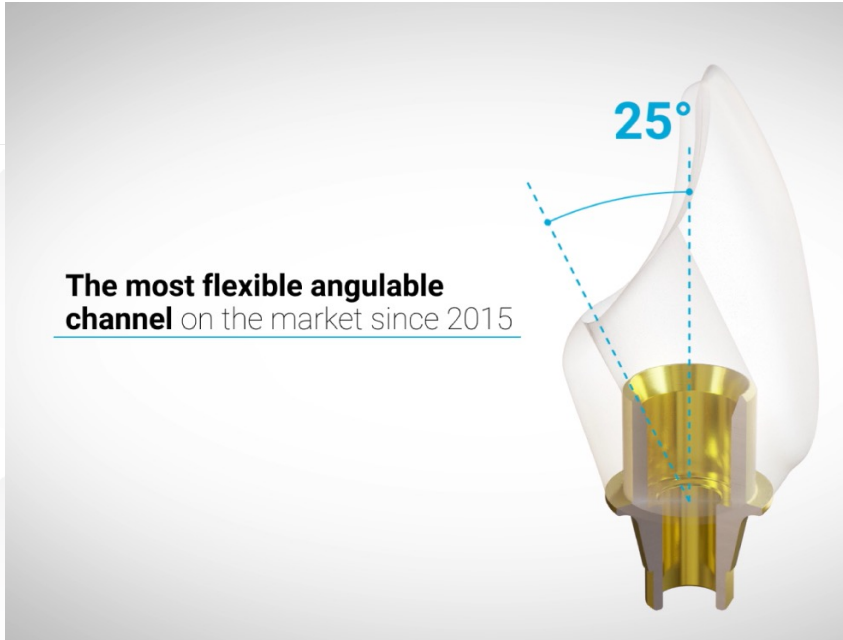


## ✓ SCAN BODIES & COMPONENTRY



The vast inventory of DESS® library files, scan bodies (flags) and componentry enables the restorative dentist to create reliable solutions on a routine basis.

Five different and a total of 12 DESS® Scan bodies were used to scan all 12 implants in this case.

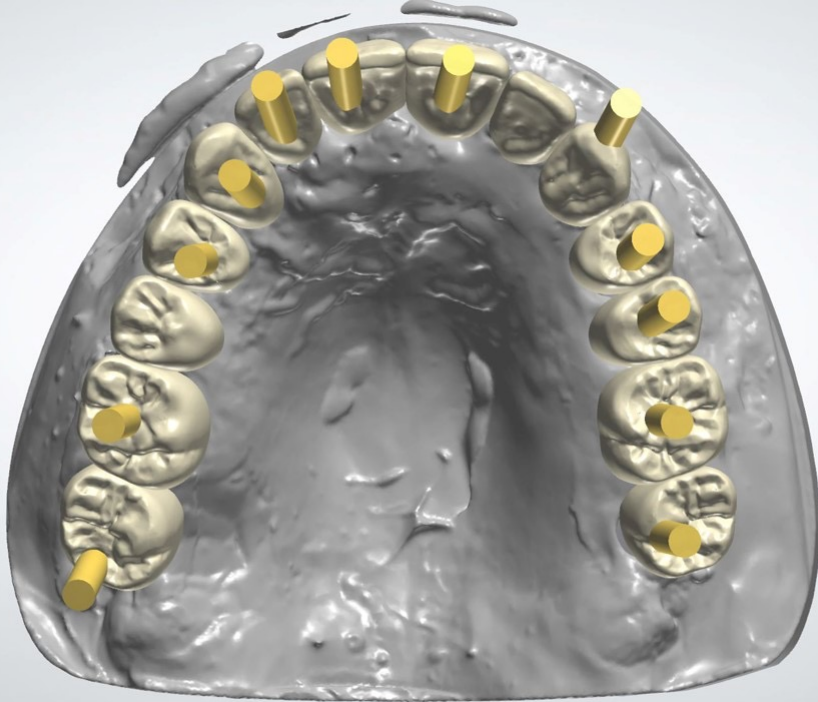


“

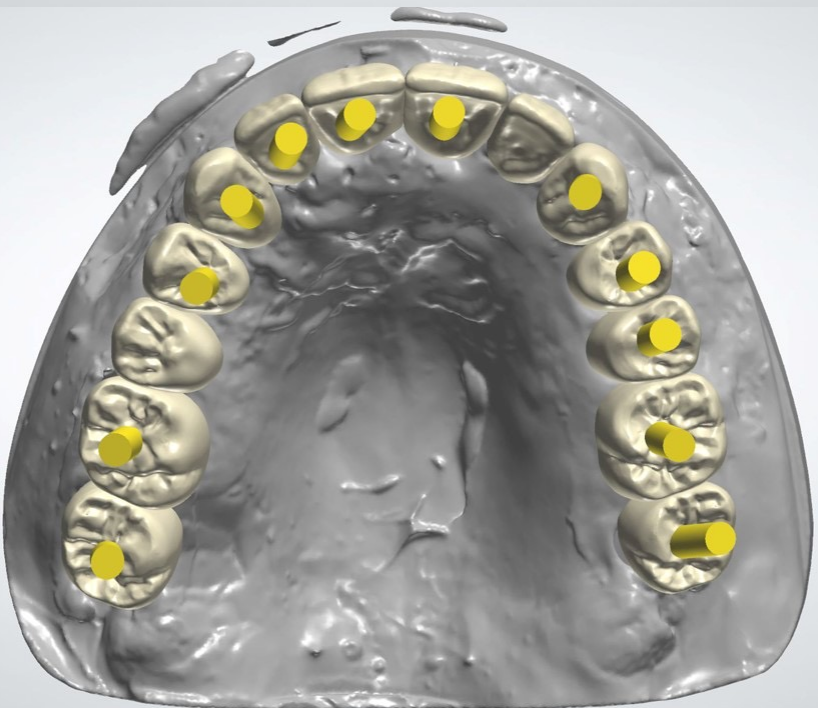
After following a diagnostic wax up and set up it is apparent that patient cannot be restored, within screw retained restoration without angulated screw channels.

This componentry is unavailable through the implant manufacturers.



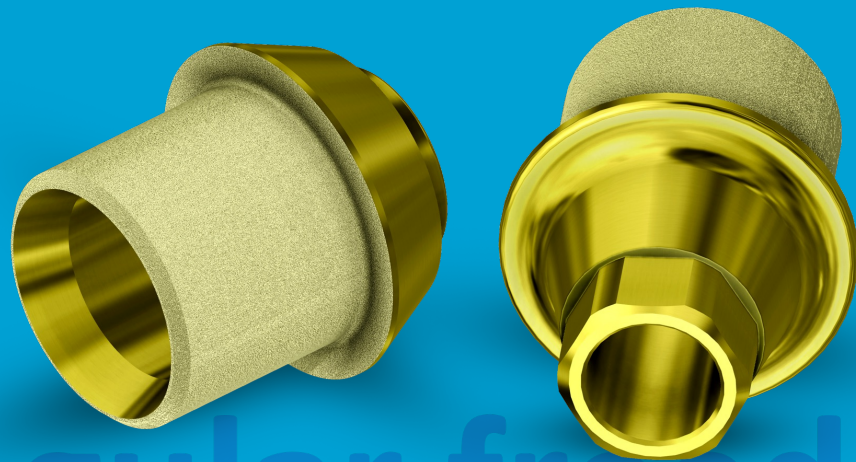


In the digital design of the full arch with screw-retained solutions we can see how there are chimneys that compromise aesthetics and functionality in pieces #2, #6, #7, #11 and #16.



However, by using our angled DESS® ANGLEBase® solution, which can be angled in all directions, there is no need for pre-planning of the chimney emergencies and we can directly after the design, reorientate and angulate the outlets, eliminating aesthetic and functional compromises.

# ANGLEBase®



# Angular freedom



## TECHNICAL INFORMATION

- Titanium Grade V ELI 23
- SelectGrip® surface treatment
- Gold anodized surface
- Two versions: engaging and non-engaging
- Up to 25° angulation in 360° rotation for optimal results of the ASC (Angulated Screw Channel)
- Typically a cementing surface of 37,83mm<sup>2</sup>
- Shaft height of 3,0mm
- Combined with our free libraries for Exocad®, 3Shape®, Dental wings® and Blenderfordental®
- CE: Class IIb
- FDA: Class II



## FEATURES

- Pure Switch® concept
- Torx® ball based screw socket
- Torx® screw included - same screw design as OEM
- Full recommended torque even at maximum angulation
- Short shaft to increase translucency and aesthetics
- Flat face to avoid rotation on engaging version; maximises Zr thickness



## CLINICAL BENEFITS

- Angulated screw channel solution
- Short shaft to give 360° angular freedom up to 25°
- SelectGrip® surface treatment: 5x better cement retention
- Torx® ball screw: optimal torque even at maximum angulation
- Warmer gingival tone in case of gingival retraction
- Parallel walls to increase strength and bond retention

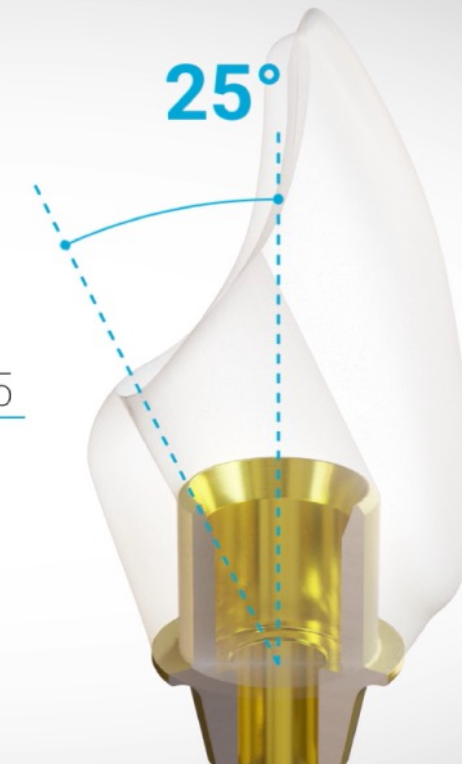


- It was elected to create 3 separate restorations due to the surplus of the number of implants that were presented with.
- Angulated screw channels were used in all 12 locations using DESS® ANGLEBase® that offers up to **25° angulation**, orientable in all directions.
- Following the design, provisional restorations were first milled in PMMA and attached to ANGLEBase® or angulated screw channels tight bases.
- Following patient acceptance of the provisional restorations, the final restorations were milled in full contour zirconia. All 3 sections with screws and torqued into based on manufacturing specifications.





**The most flexible angulable channel** on the market since 2015



## Final Result

Screw access was sealed with tape and composite resin.  
Patient was followed on a routine basis.

- After prosthesis placement:
- ✓ Optimum aesthetic results thanks to DESS® angled solution: ANGLEBase®
- ✓ Perfect adaptation to soft tissues

## Conclusion

When facing a challenging case, a Solutions Provider with many and proper resources will simplify your work & will improve restoration results.

This complicated multiple connection case was successfully solved thanks to DESS® resources:

- ✓ **DESS® +30 compatibilities:** A range to cover multiple cases
- ✓ **DESS® Libraries:** Total freedom to use & create
- ✓ **DESS® Scan Bodies:** Perfect scan – Perfect results
- ✓ **DESS® ANGLEBase®:** the ultimate angled solution.



## Dr. Steven A. Brisman

USA

- Doctor of Dental Medicine, University of Pennsylvania School of Dental Medicine.
- Certificate in Prosthodontics, New York University College of Dentistry.
- President of the Greater New York Academy of Prosthodontics in 2019.
- Former Director of Advanced Prosthodontics Touro College of Dental Medicine and assistant professor of Post-Graduate Prosthodontics NYU College of Dentistry.

*Brisman*

