



DESS

> DENTAL SMART SOLUTIONS



Catalogue
AURUMBase® 2023



AURUMBase®

There are numerous clinical situations where the long-axis of the implant results in an unfavorable location of the prosthetic screw access hole. One solution might be to sacrifice the retrievability and cement over the access hole or compromise the aesthetic results.

Now, DESS introduces the AURUMBase® system, which allows for an angular adjustment of up to 25°. The specially designed Torx®-based screw and driver concept will retain the ability to use full recommended torque even at full angulation.

The AURUMBase® is made of titanium grade V ELI and has a gold-anodised surface finishing that will further optimise the appearance, especially in the aesthetic area. The shaft surface also features the patented and well proven SelectGrip® for optimal cement retention.

To facilitate prosthetic work using traditional casting procedures, AURUMBase® pre-formed castable caps can be used. They are delivered in multi-packs of 5 pieces, in a straight version as well as pre-angled with 10° and 20°. They are designed to optimise the placement and tightening of the AURUMBase® screw with the special driver.

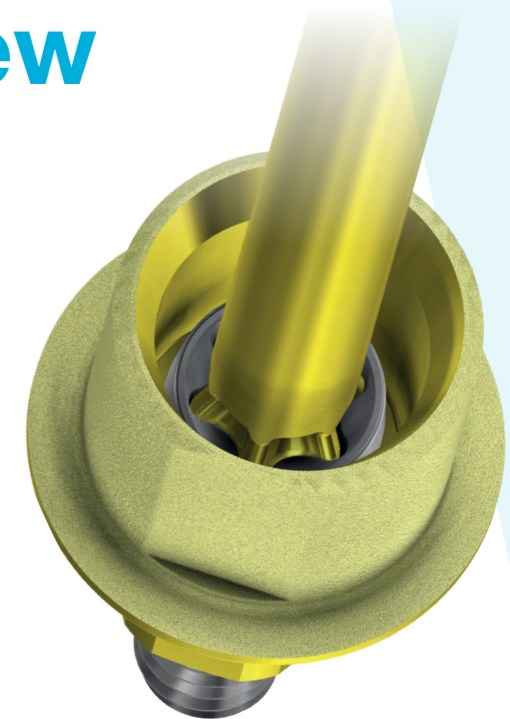
To optimise the possible angulation of the access hole, the shaft of the AURUMBase® has been reduced to only 3mm, but with a bonding area of more than 33mm², bigger than other higher but sliced solutions.

During AURUMBase® development process, we conducted both de-bonding and static fatigue tests comparing the results, not only to DESS® standard Ti-Base, but also to competitors' components. A dynamic fatigue test was also conducted and passed the required 5 million load cycles.

For angulated screw channel access

Made in titanium grade V ELI with a gold anodised hue surface.

Available for most platforms with engaging and non-engaging versions.

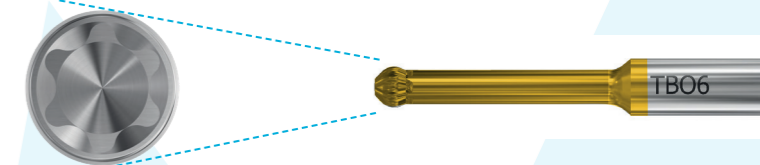


AURUMBase® Castables

Unique, pre-formed castable caps in straight, 10° and 20° angles for non CAD/CAM procedures.

AURUMBase® Driver and screw system

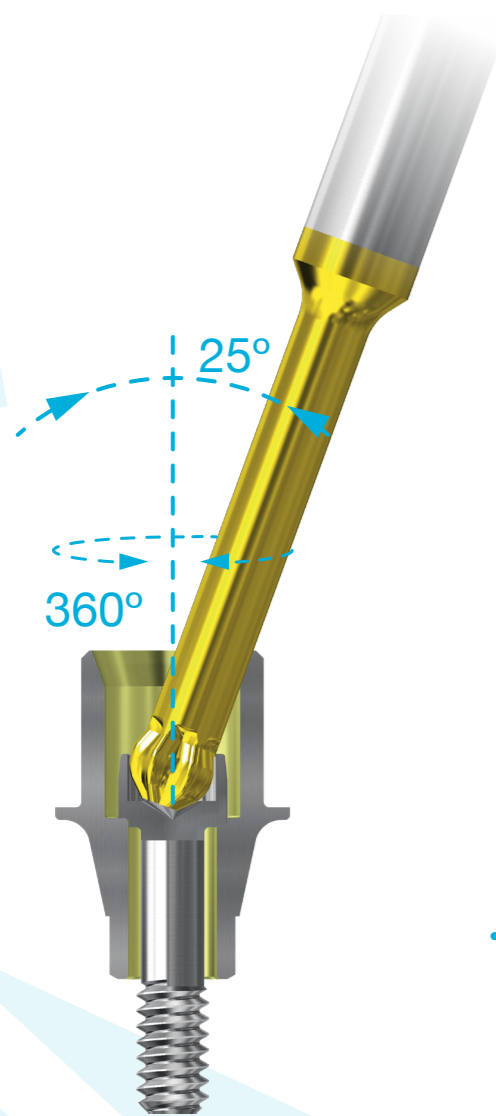
The AURUMBase® TB06 drivers follow strictly the Torx® ball system design parameters. Torx® has set the global standard in reliability. This will assure optimal fastening torque even at maximum angle of the driver.



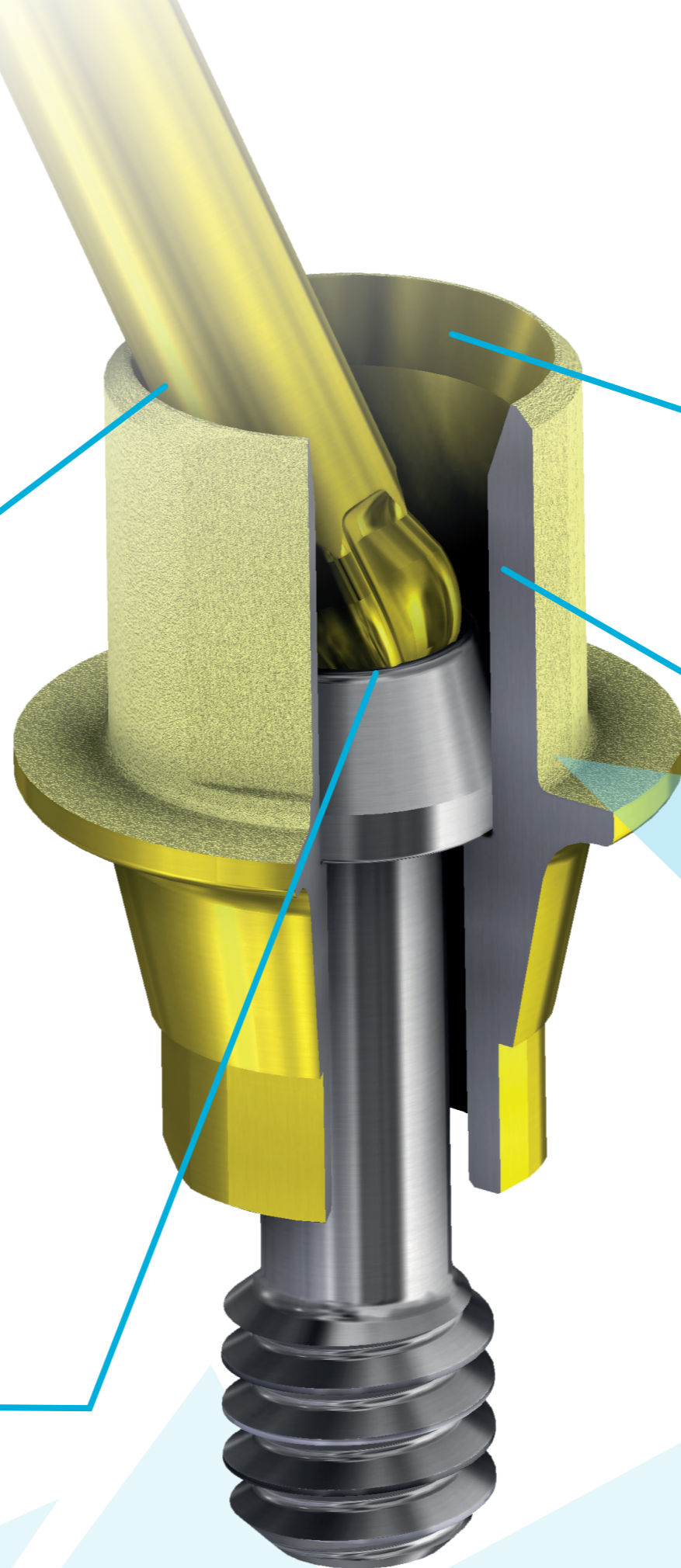
AURUMBase[®]

Features & benefits

Up to 30% reduction in the emergence hole design within CAD libraries to further improve the flexibility and aesthetic outcome.

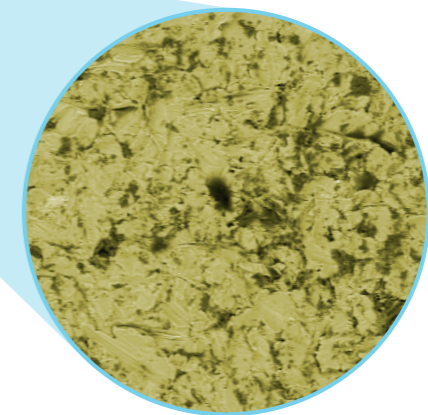


Torx[®] based screw and driver that allow for up to 25° angulation with full recommended torque.



bevelled edge to optimize the driver angulation

Made of Titanium Grade V ELI with a gold anodised surface finish.



Cement shaft with patented SelectGrip[®] surface for optimal crown retention

Technical Solutions

Torx® AURUMBase® Screw system

Screws have a flat seat to minimise tension when there is a slight misalignment between screw retained structures and implants. A flat design is more forgiving and transfers the torque to an optimal preload of the screw. A conical screw requires a perfect alignment and centering between the screw and seat.



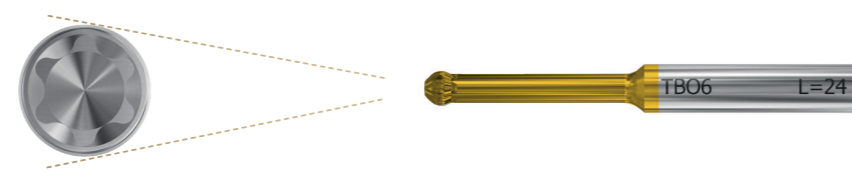
AURUMBase®

Torx® ball AURUMBase® Driver and screw system

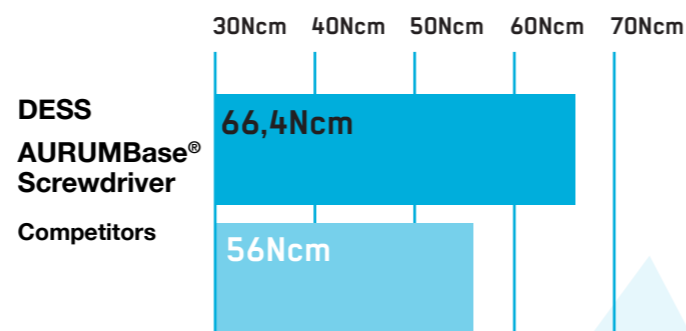
Screws feature the standard ISO 10.664 Torx®06 screw head and can be used in straight operations with any standard Torx®06 driver.

The AURUMBase® TB06 drivers follow strictly the Torx® ball system design parameters. Torx® has set the global standard in reliability. This will assure optimal fastening torque even at maximum angle of the driver.

All AURUMBase® screws and screwdrivers are compatible with other systems on the market accomplishing ISO 10.664.



Average Breaking Torque for Drivers

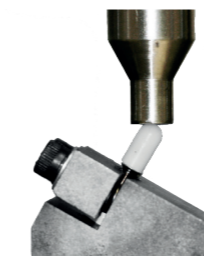
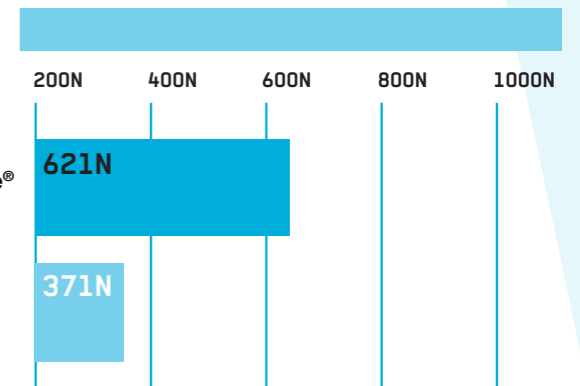


Bond and Fatigue strenght



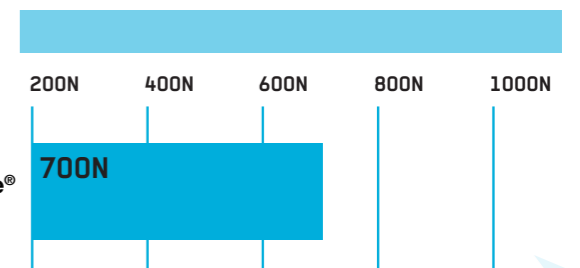
DESS AURUMBase® has comparable bonding retention to DESS Ti-Base and clearly superior to a competitor brand with a 50% longer cement shaft once sandblasted.

Bonding retention



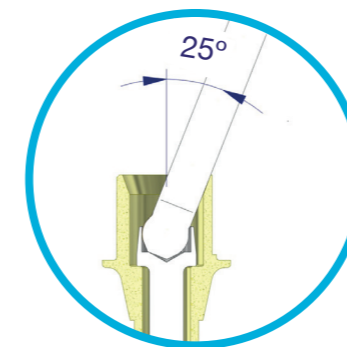
No significant difference in static fatigue strength between DESS® AURUMBase® and DESS® Ti-Base in standard ISO 13485 test using Zirconia caps despite AURUMBase® having a 33% shorter shaft.

Static Fatigue Test

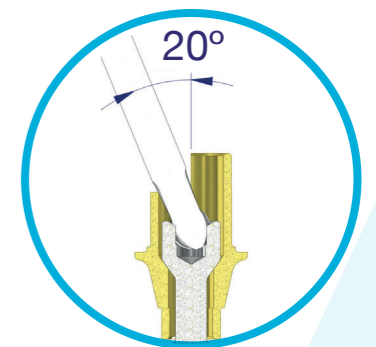


AURUMBase®

Graphic illustration comparing DESS® AURUMBase® solution and the competitors' common design, where part of the cylinder is cut open to allow the angulation of the screwdriver. This design does not increase the possible tilt whilst presenting other possible mechanical disadvantages. The 'cylinder cut' design restricts the rotational freedom of the entry angle.

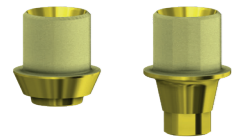


AURUMBase®



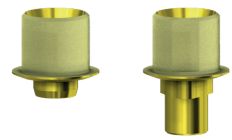
Competitors' design

AURUMBase®



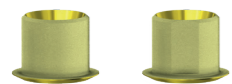
NobelActive® NobelReplace® CC Active Hex

	NP	RP
	3.5	4.3/5.0
	36.041	36.042
	37.041	37.042
	19.441	19.442



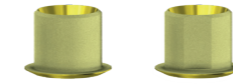
Nobel Replace Select™ Tri-Lobe

	NP	RP	WP
	NP/3.5	RP/4.3	WP/5.0
	36.004	36.005	36.006
	37.004	37.005	37.006
	19.460	19.405	19.405



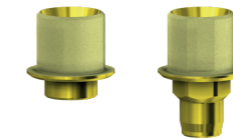
NobelBrånemark® External Hex Universal

	NP	RP
	NP/3.5	RP/4.1
GH 0,3mm	36.001	36.002
GH 1,5mm	36.001/2	36.002/2
GH 2,5mm	36.001/3	36.002/3
GH 0,3mm	37.001	37.002
GH 1,5mm	37.001/2	37.002/2
GH 2,5mm	37.001/3	37.002/3
	19.401	19.402



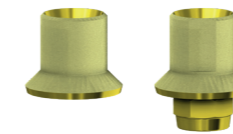
3i Osseotite® External Hex USA

		NP	RP	WP
		3.4	4.1	5.0
GH 0,3mm		36.011	36.012	36.013
GH 1,5mm		36.011/2	36.012/2	
GH 2,5mm		36.011/3	36.012/3	
GH 0,3mm		37.011	37.012	37.013
GH 1,5mm		37.011/2	37.012/2	
GH 2,5mm		37.011/3	37.012/3	
		19.402	19.402	19.402



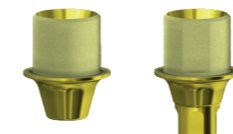
3i Certain® Internal Hex "CLICK"

		NP	RP	WP
		3.4	4.1	5.0
		36.014	36.015	36.016
		37.014	37.015	37.016
		19.438	19.438	19.438



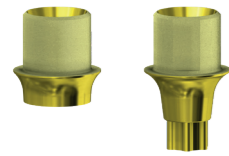
Straumann® Tissue Level & synOCTA® Octagon

		RN	WN
		4.1/4.8	4.8/6.5
		36.046	36.047
		37.009	37.045
		19.446	19.446



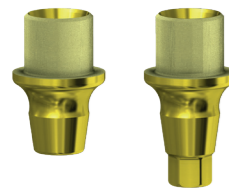
Straumann® Bone level® Conical BL

		NP	RP
		NC/3.3	RC/4.1-4.8
		36.043	36.044
		37.043	37.044
		19.443	19.443



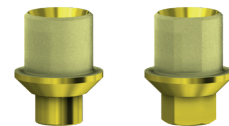
Straumann® BLX
Conical BLX

		RB	WB	RB/WB
		3.5	4.5	
	GH 1,5mm	36.062	36.063	36.062
	GH 1,5mm	37.062	37.063	37.062
		19.441	19.441	19.441



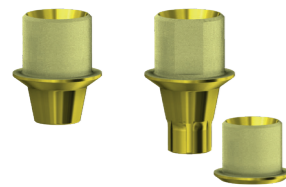
Neodent Grand Morse®
NEO GM

			GM
	GH 2,5mm		36.035/3
	GH 2,5mm		37.035/3
			19.444



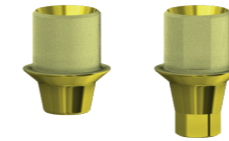
Zimmer® Screw-vent
Internal Hex USA

		NP	RP	WP
		3.5	4.5	5.7
		36.017	36.018	36.019
		37.017	37.018	37.019
		19.417	19.417	19.417



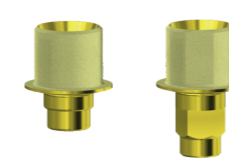
Astra Tech implant system™ EV
Conic EVO

		EV/3.6	EV/4.2	EV/4.8
		3.6	4.2	4.8
		36.059	36.060	36.061
		37.059	37.060	37.061
	On uniabutment®	36.058		
		19.441	19.460	19.461
	On uniabutment®	19.331		



Astra Tech Osseospeed™
Internal Hex Conic

			RP	WP
			3.5-4.0	4.5-5.0
		36.024		36.025
		37.024		37.025
		19.441		19.425



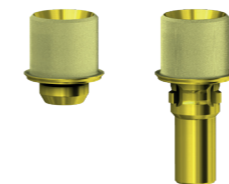
Xive®
Internal Hex FD

		NP	RP	WP
		3.4	3.8	4.5
		36.038	36.039	36.040
		37.038	37.039	37.040
		19.438	19.438	19.438



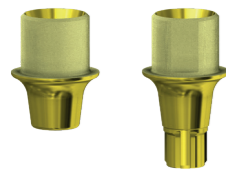
Osstem® TS / Hiossen® ET
Conic OSS

		Mini	STD
		Mini	Regular
		36.072	36.073
		37.072	37.073
		19.444	19.444



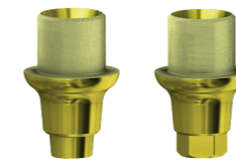
Camlog®
Internal Cam

		3.8	4.3
		3.8	4.3
		36.065	36.066
		37.065	37.066
		19.444	19.444



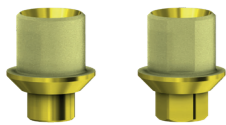
Conelog®
Internal Con

	NP	RP	WP
	3.3	3.8/4.3	5.0
	36.074*	36.075*	36.076*
	37.074*	37.075*	37.076*
	19.474	19.474	19.474



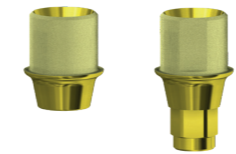
Megagen AnyRidge®
Conic Anyr

	36.057
	37.057
	19.460



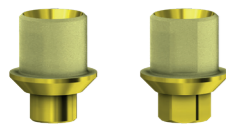
Biohorizons® internal
Internal hex BH

	NP	RP	WP
	3.5	4.5	5.7
	36.087	36.088	36.089
	37.087	37.088	37.089
	19.417	19.417	19.417



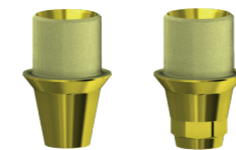
Medentis ICX®
Conic IC

GH 2,2mm		36.080*
GH 0,9mm		36.180*
GH 2,2mm		37.080*
GH 0,9mm		37.180*
2,2mm		19.444
0,9mm		19.443



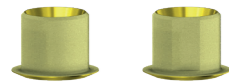
MIS® seven
Internal hex MI

	NP	SP
	3.3	3.75-4.2
	36.017	36.018
	37.017	37.018
	19.417	19.417



Dentium Superline™ & Implantium®
Conic DENT

	RP
	3.6 3.8 4.0 4.5 5.0
	36.090*
	37.090*
	19.405



Phibo® TSH®
External Hex PH

	NP	SP	WP
	S2	S3-S4	S5
	36.030*	36.031*	36.032*
	36.030/2*	36.031/2*	36.032/2*
	36.030/3*	36.031/3*	36.032/3*
	37.030*	37.031*	37.032*
	37.030/2*	37.031/2*	37.032/2*
	37.030/3*	37.031/3*	37.032/3*
	19.403	19.402	19.402

Multi-Unit



		36.007	36.054
		19.306	19.331

Kunststoffhülse für AURUMBase®



Pack de 5	0°	33.100-P5
Pack de 5	10°	33.101-P5
Pack de 5	20°	33.102-P5



Pack de 5	0°	33.200-P5
Pack de 5	10°	33.201-P5
Pack de 5	20°	33.202-P5

Straumann® Tissue Level & synOCTA®



Torx® ball Screwdriver	20 mm	24 mm	30 mm	35 mm
	DT20TB06	DT24TB06	DT30TB06	DT35TB06

All DESS products are manufactured according to ISO 9001 and ISO 13485 with CE marking for all products Class IIb

All DESS® AURUMBase® screws and screwdrivers are based on the standard ISO 10664 3i® and 3i Certain®, Miniplant®, MicroMiniplant™ and Osseotite® are registered trademarks of 3i Implant Innovations, USA

ASTRA TECH™, OsseoSpeed™, ANKYLOS® C/X, XiVE®, FRIADENT®, ASTRATECH implant system™ EV and UniAbutment®

Cerec® are registered trademarks of DENTSPLY SIRONA Implants

BioHorizons® is a registered trademark of BioHorizons, INC.

Brånemark System®, NobelReplace® and Replace Select™, NobelActive™, NobelReplace® CC, NobelSpeedy™ and Multi-unit® are registered trademarks of Nobel Biocare AB,

Neodent®, Grand Morse®, Straumann® and synOcta® are registered trademarks of Straumann Holding AG, Switzerland

MIS® is a registered trademark of MIS Implant Technologies Ltd.

Zimmer Screw-Vent® and SwissPlus® are registered trademarks of Zimmer Dental INC, USA

Dyna® is a registered trademark of Dyna Dental Engineering BV

Locator® is a registered trademark of ZEST IP Holdings

Camlog® and Conelog® are registered trademarks of CAMLOG Biotechnologies AG

Megagen® is a registered trademark of MEGAGEN IMPLANT CO. LTD

TORX® is a trademark of ACUMENT INTELLECTUAL PROPERTIES, LLC

Bego Semados® is a registered trademark of BEGO GmbH & Co. KG

Anthogyr® is a registered trademark of Anthogyr SAS

Medentis ICX® is a registered trademark of medentis medical GmbH

Osstem®, Hiossen® is a registered trademark of OSSTEM IMPLANT CO. LTD

Dentium® is a trademark of Dentium Co. Ltd.

GOBALD® is a trademark of Global D SASU.

Biotech Kontakt® is a trademark Biotech Dental SAS.

BTI® is a trademark BTI Biotechnology Institute.

PHIBO® is a trademark PHIBO Dental Solutions S.L.

DESS products can be used only by licensed dentists, physicians and labs.

Please refer ever to the instructions of use available on the website

www.dessdental.com

or supplied with the product.

Some products may not be available in your country. Some of the products are cleared for US and Canada.

Please contact your local distributor for more details.



Health Canada
Medical Device Licenses
94512 & 107023



