

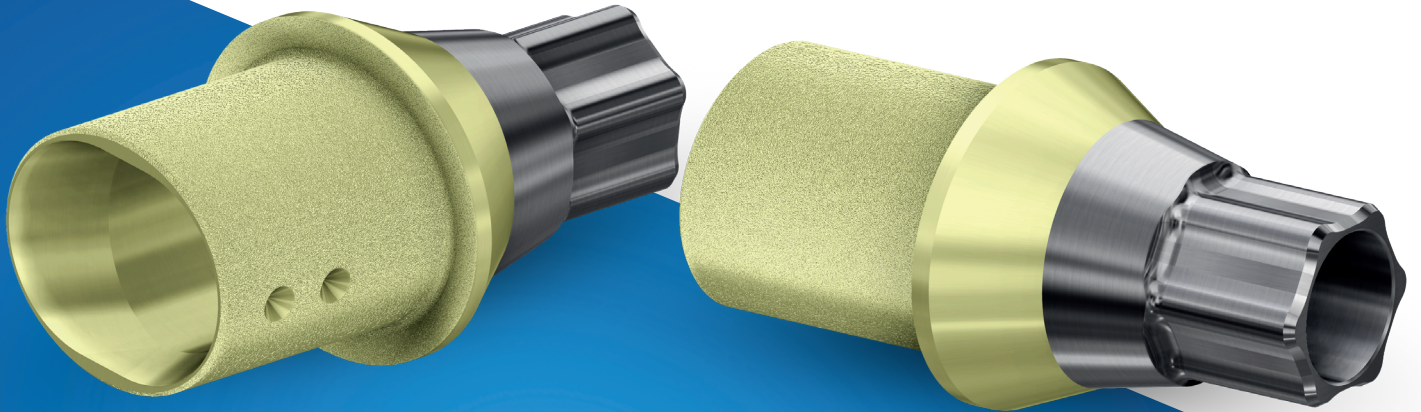


DESS

> DENTAL SMART SOLUTIONS

Catalogue

ELLIPTIBase<sup>®</sup> 2024





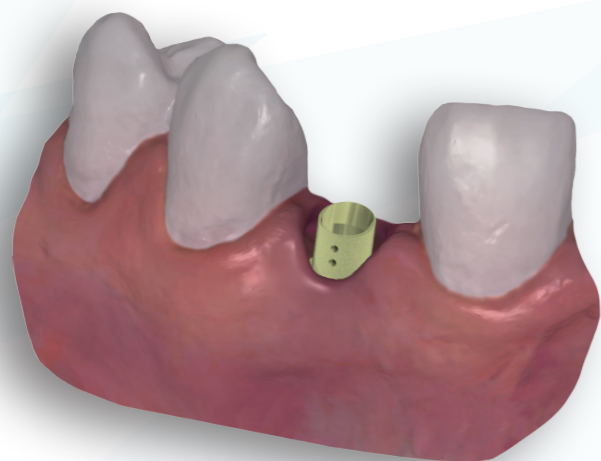
# ELLIPTIBase®

## Tight spaces not a problem

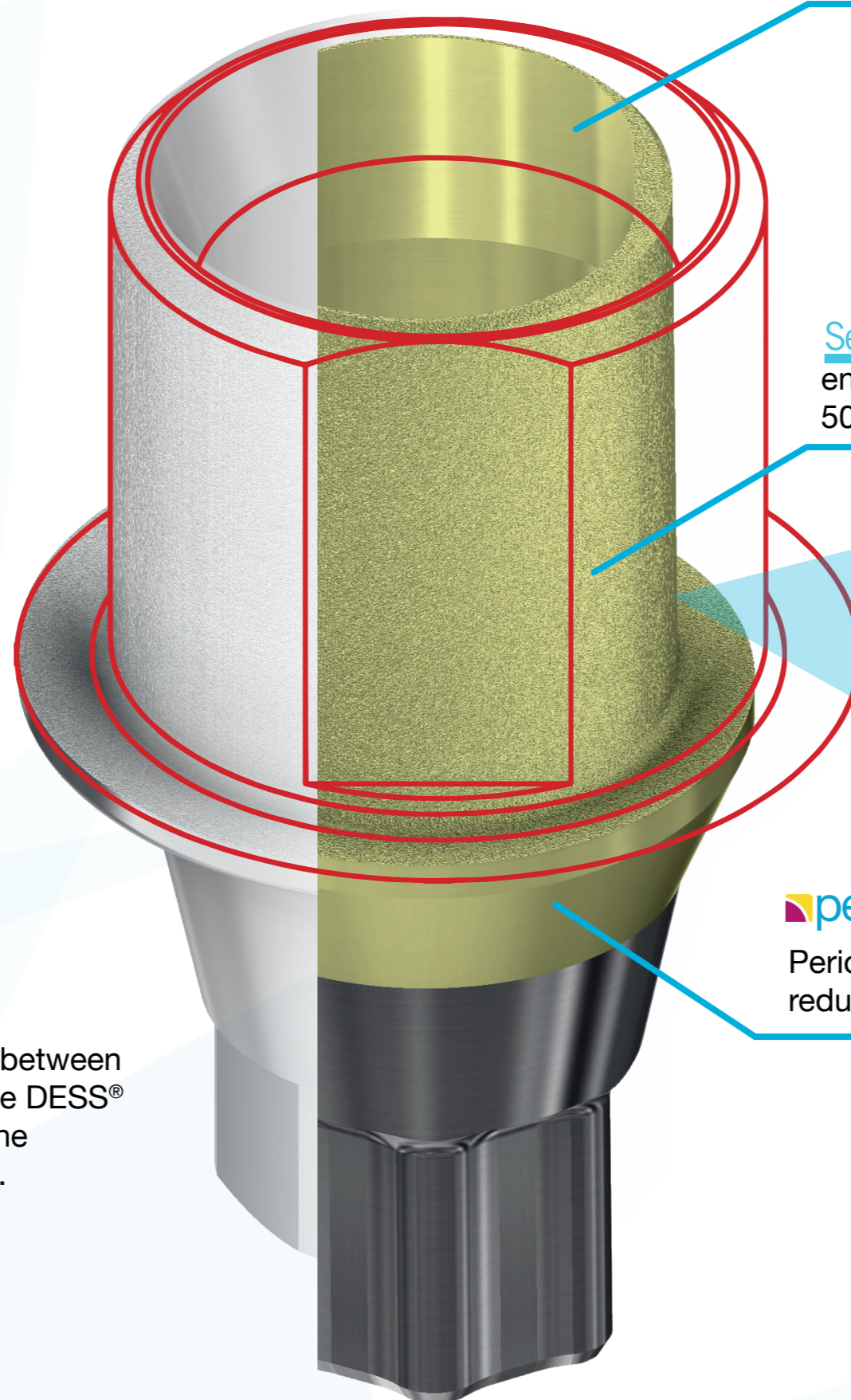
Restorations in positions where the interdental space is limited, have always been challenging, up until now, existing solutions would mean making sacrifices. Either because of the lack of space for the correct amount of restorative material or when it come to achieving the best aesthetical result.

ELLIPTIBase® has been specially designed to solve these problems.

The elliptical design allowed us to increase the space for restorative material, whilst maintaining almost the same cementation area.

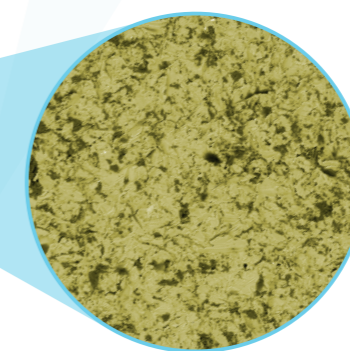


Comparisson between a standard size DESS® TI-Base and the ELLIPTIBase®.



20° entry angle for a more aesthetical restoration.

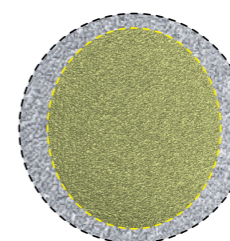
**SelectGrip®** our patented surface enhancement treatment with up to 500% improved retention.



\*Microscope view



Periocat® "ZrN Surface treatment", reduces inflammation and plaque adhesion.



### Footprint

- ELLIPTIBase®
- TI-Base

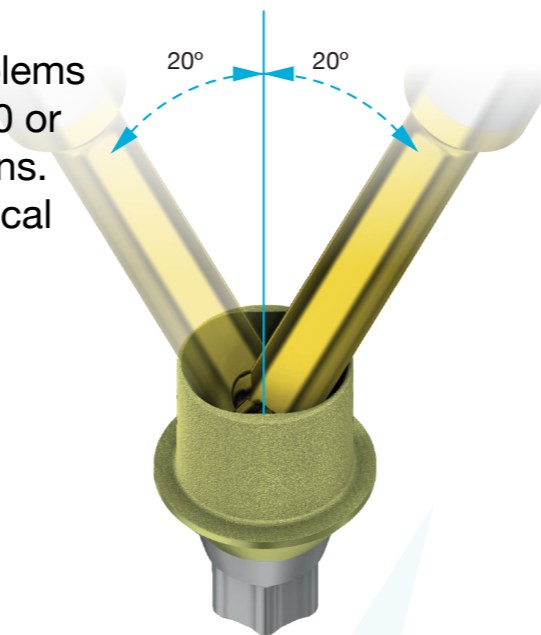
Reduction in size of 22% almost the same cementation area.



# Aesthetic Advantages

The DESS® ELLIPTIBase® addresses all those problems that arise when working on restorations where a 3.0 or 3.5 implant is used, particularly the incisors positions. These restorations require for an improved aesthetical result and a strong restoration.

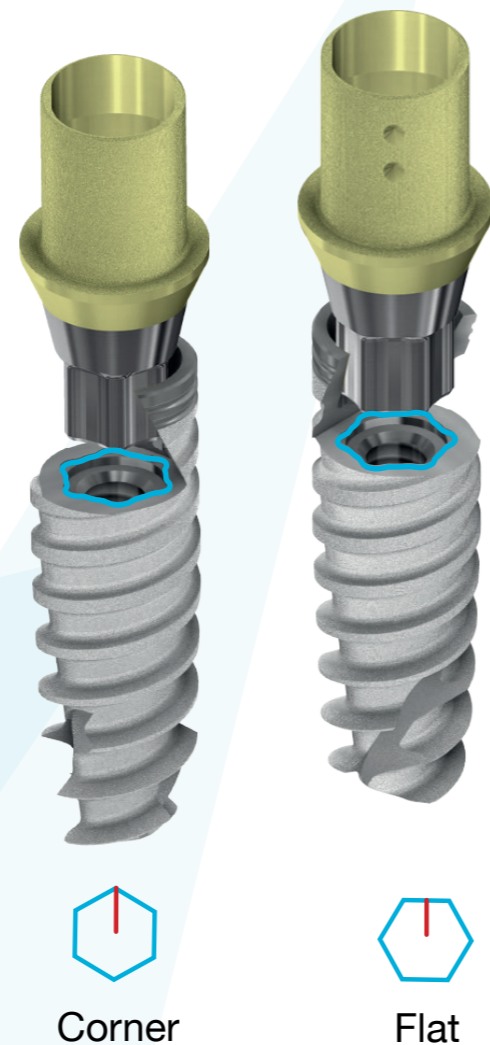
The 20° angulation on the access channel, combined with a lower shaft height will allow you to achieve the best aesthetical results without compromise.



# Corner vs. Flat

Due to the shape of the ELLIPTIBase® we created corner and flat versions that depending on the orientation in which the implant has been placed, can be used to achieve the best result.

On any given hex connection the angle is of 45°, the corner connection would aid reducing the final angle of the shaft.™



| Shaft orientation

⬡ Implant position

**periocoat®**

**ZrN**

## Enhanced Surface Treatment

- Less inflammation.
- Less plaque adhesion.
- Higher corrosion resistance.
- Easier to clean.
- 6x harder than Titanium Oxide.



### Less biofilm genesis on the surface

With less biofilm and plaque, there will be less quantity and quality of bacteria that can cause soft tissue inflammation.



### Increased collagen stability

ZrN creates less of an inflammatory burden and collagen degradation in the gingival tissue as evidenced by less aMMP8 biomarker in the gingival fluid.



### Surface is more resistant to corrosion

Dental plaque produces acid that will corrode the surface and increase roughness. ZrN is harder and has a smaller friction coefficient, which makes it more resistant to corrosion.



### Increased adhesion of fibroblasts

A higher adhesion of fibroblasts locks the path between the surface and soft tissue preventing bacteria to enter the gingival margin.



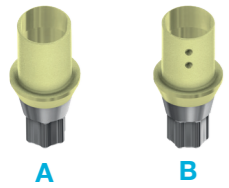
### Six times harder than Titanium Oxide

Will not scratch as easily when cleaned using cures, ultrasound or other instruments.

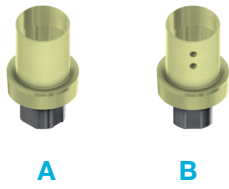


### ZrN has a warm gold hue

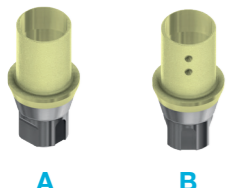
A warmer goldish hue has aesthetic advantages compared to the titanium grey.



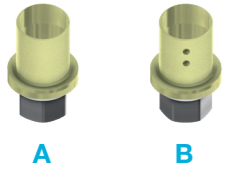
		3.0	NP	RP	WP
<b>NobelActive® NobelReplace® CC</b> Active Hex		3.0	3.5	4.3/5.0	5.5
<b>A</b> corner		56.068			
<b>B</b> flat		57.068			
	Torx Screw ELLIPTIBase®	19.468			



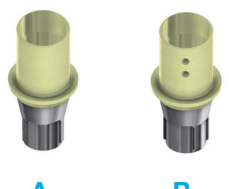
		3.5	NNC	RN	WN
<b>Straumann® Soft Tissue level &amp; synOCTA®</b> Octagon		3.5	NNC	RN	WN
<b>A</b> corner		56.070			
<b>B</b> flat		57.070			
	Torx Screw ELLIPTIBase®	19.441			



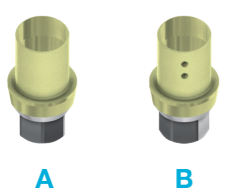
		NC/3.3	RP	NP/RP
<b>Straumann® Bone level®</b> Conical BL		NC/3.3	RP	NP/RP
<b>A</b> corner		56.043		
<b>B</b> flat		57.043		
	Torx Screw ELLIPTIBase®	19.443		



		3.5	RP	WP
<b>Zimmer® Screw-vent</b> Internal Hex USA		3.5	RP	WP
<b>A</b> corner		56.017		
<b>B</b> flat		57.017		
	Torx Screw ELLIPTIBase®	19.417		



		EV/3.0	EV/3.6	EV/4.2	EV/4.8	EV/5.4
<b>Astra Tech implant system™ EV</b> Conic EVO		3.0	3.6	4.2	4.8	5.4
<b>A</b> corner		56.406				
<b>B</b> flat		57.406				
	Torx Screw ELLIPTIBase®	19.331				



		3.0	NP	RP	WP
<b>Biohorizons® internal</b> Internal hex BH		3.0	NP	RP	WP
<b>A</b> corner		56.099			
<b>B</b> flat		57.099			
	Torx Screw ELLIPTIBase®	19.400			

All DESS products are manufactured according to ISO 9001 and ISO 13485 with CE marking for all products Class IIb IIa

All DESS® ANGLEBase® screws and screwdrivers are based on the standard ISO 10664 3i® and 3i Certain®, Miniplant®, MicroMiniplant™ and Osseotite® are registered trademarks of 3i Implant Innovations, USA

ASTRA TECH™, OsseoSpeed™, ANKYLOS® C/X, XiVE®, FRIADENT®, ASTRATECH implant system™ EV and UniAbutment®

Cerec® are registered trademarks of DENTSPLY SIRONA Implants

BioHorizons® is a registered trademark of BioHorizons, INC.

Brånemark System®, NobelReplace® and Replace Select™, NobelActive™, NobelReplace® CC, NobelSpeedy™ and Multi-unit® are registered trademarks of Nobel Biocare AB,

Neodent®, Grand Morse®, Straumann® and synOcta® are registered trademarks of Straumann Holding AG, Switzerland

MIS® is a registered trademark of MIS Implant Technologies Ltd.

Zimmer Screw-Vent® and SwissPlus® are registered trademarks of Zimmer Dental INC, USA

Dyna® is a registered trademark of Dyna Dental Engineering BV

Locator® is a registered trademark of ZEST IP Holdings

Camlog® and Conelog® are registered trademarks of CAMLOG Biotechnologies AG

Megagen® is a registered trademark of MEGAGEN IMPLANT CO. LTD

Torx is a trademark of ACUMENT INTELLECTUAL PROPERTIES, LLC

Bego Semados® is a registered trademark of BEGO GmbH & Co. KG

Anthogyr® is a registered trademark of Anthogyr SAS

Medentis ICX® is a registered trademark of medentis medical GmbH

Osstem®, Hiossen® is a registered trademark of OSSTEM IMPLANT CO. LTD

Dentium® is a trademark of Dentium Co. Ltd.

GOBALD® is a trademark of Global D SASU.

Biotech Kontakt® is a trademark Biotech Dental SAS.

BTI® is a trademark BTI Biotechnology Institute.

PHIBO® is a trademark PHIBO Dental Solutions S.L.

DESS products can be used only by licensed dentists, physicians and labs.

Please refer ever to the instructions for use available on the website

[www.dess-usa.com](http://www.dess-usa.com)

or supplied with the product.

Some products may not be available in your country. Some of the products are cleared for US and Canada.

Please contact your local distributor for more details.



Health Canada  
Medical Device Licenses  
94512 & 107023







 **DESS**  
DENTAL SMART SOLUTIONS









[www.dess-usa.com](http://www.dess-usa.com)