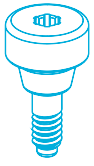


DESS



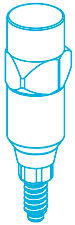
Technical sheets

INDEX



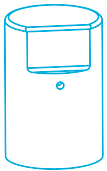
HEALING
ABUTMENT

03



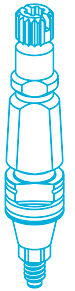
INTRAORAL
SCAN ABUTMENT

04



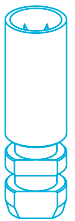
ON TI-BASE
SCAN ABUTMENT

05



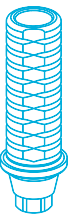
TRANSFER

07



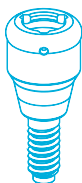
ANALOGUE AND
DIGITAL ANALOGUE

08



TEMPORARY
ABUTMENT

09



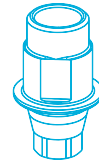
DESSLoc®

10



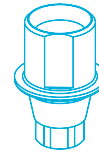
MULTI-UNIT
ABUTMENTS

11



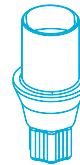
Ti-Base

12



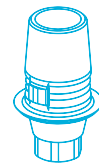
AURUMBase®

13



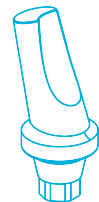
ELLIPTIBase®

14



C-Base®

15



ABUTMENTS

16



PRE-MILLED
BLANK

17

HEALING ABUTMENT

DESS ref. 20.XXX



TECHNICAL INFORMATION

- Titanium grade V ELI 23
- CE: Class IIb
- FDA: Class II



FEATURES

- Pure Switch® concept
- Multiple gingival heights options: 1,5-6,5mm depending on the system
- Laser marked with height and platform diameter



CLINICAL BENEFITS

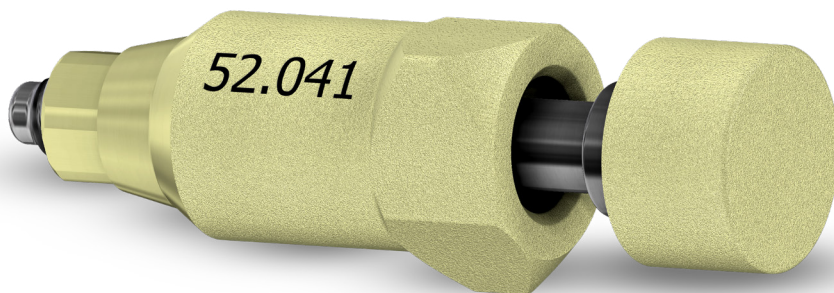
- Allows gingival healing and adaption before prosthetic restoration
- The different gingival heights options allow the adaption of the emergence profile to the crown margin

18 SYSTEMS

- NOBELACTIVE® & NOBELREPLACE® CC
- NOBEL REPLACE SELECT™
- NOBEL BRÄNEMARK®
- 3i OSSEOTITE®
- 3i CERTAIN®
- STRAUMANN® SOFT TISSUE LEVEL & synOcta®
- STRAUMANN® BONE LEVEL
- STRAUMANN® BLX
- ZIMMER SCREW-VENT®
- ASTRA TECH IMPLANT SYSTEM™ EV
- ASTRA TECH OSSEOSPEED™
- DENTSPLY FRIADENT XIVE®
- DENTSPLY ANKYLOS® C/X
- CAMLOG®
- BIOHORIZONS® INTERNAL
- BIOHORIZONS® EXTERNAL
- MIS® SEVEN
- MULTI-UNIT CONNECTION

INTRAORAL SCAN ABUTMENT

DESS ref. 52.XXX



TECHNICAL INFORMATION

- Titanium grade V ELI 23
- PerioCoat® and SelectGrip® surface treatment
- Radio-opaque
- Combined with our free libraries for Exocad®, 3Shape®, Dental wings® and Blenderfordental®
- CE: Class I
- FDA: Class I



FEATURES

- Autoclavable and reusable
- Better z-axis accuracy
- No screw hole
- Hand tightened
- Captive screw included - same screw design as OEM
- Laser marked with the reference number

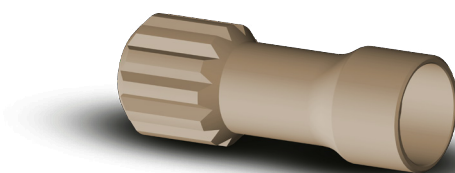


CLINICAL BENEFITS

- PerioCoat® and SelectGrip® for an optimal scan without glitter
- PerioCoat® to ensure high durability
- Scans in-mouth implant positioning for CAD designs
- Includes manual tool DTPEIPEEK to facilitate the insertion and tightening*
- Autoclavable and cleanable thanks to the removable screw

32 SYSTEMS

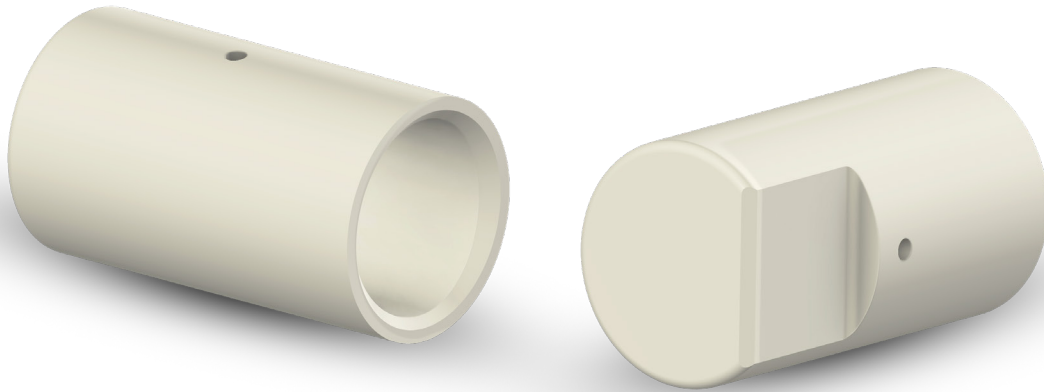
	NOBELACTIVE® & NOBELREPLACE® CC		CONELOG®
	NOBEL REPLACE SELECT™		BIOHORIZONS® INTERNAL
	NOBEL BRANEMARK®		BIOHORIZONS® EXTERNAL
	3i OSSEOTITE®		MIS® SEVEN
	3i CERTAIN®		MIS® C1
	STRAUMANN® SOFT TISSUE LEVEL & synOcta®		MIS® V3
	STRAUMANN® BONE LEVEL		MEGAGEN AnyRidge®
	STRAUMANN® BLX		ANTHOGYR AXIOM®
	NEODENT® GRAND MORSE		MEDENTIS ICX®
	ZIMMER SCREW-VENT®		GLOBALD IN-KONE®
	ASTRA TECH IMPLANT SYSTEM™ EV		DENTIUM SUPERLINE™ & IMPLANTUM®
	ASTRA TECH OSSEOSPEED™		BEGO SEMADOS®
	DENTSPLY FRIADENT XIVE®		BIOTECH KONTACT®
	DENTSPLY ANKYLOS® C/X		BTI®
	OSSTEM® TS		PHIBO® TSH®
	CAMLOG®		MULTI-UNIT CONNECTION



*DTPEIPEEK

ON TI BASE® SCAN ABUTMENT

DESS ref. 53.XXX



TECHNICAL INFORMATION

- Made of PEEK
- Two versions: engaging and non-engaging
- Combined with our free libraries for Exocad®, 3Shape®, Dental wings®, Blenderfordental®
- CE: Class I
- FDA: Class I



FEATURES

- Same scan abutment for Ti-Base or AURUMBase® depending on the compatibility*



CLINICAL BENEFITS

- Autoclavable and reusable
- Scans implant position for CAD designs
- In cases of under bone level, the Ti-Base and AURUMBase® elevates the height for an optimal scan

*see page 7



(+34) 937 198 995



info@dessdental.com



www.dessdental.com



ON TI BASE® SCAN ABUTMENT

DESS ref. 53.XXX



	REF	ENGAGEMENT	ON TI-Base COMPATIBILITIES
WIDE	53.110-P10	Non-Engaging	-Nobel Branemark WP (Just Ti-Base) -Straumann Synocta RN (Tibase & AURUMBase®) -BioHorizons External WP (Tibase & AURUMBase®)
	53.210-P10	Engaging	



	REF	ENGAGEMENT	ON TI-Base COMPATIBILITIES
SYNOCTA	53.148-P5	Non-Engaging	-Straumann Synocta WN - (Ti-Base)
	53.248-P5	Engaging	



	REF	ENGAGEMENT	ON TI-Base COMPATIBILITIES
SRA	53.198-P5	Non-Engaging	-Straumann Bone Level on SRA - (T-iBase)
	53.298-P5	Engaging	



	REF	ENGAGEMENT	ON TI-Base COMPATIBILITIES
MULTI-UNIT	53.107-P5	Non-Engaging	-Multiunit RP - (Ti-Base and AURUMBase®) -Mis C1-V3 Multiunit - (Ti-Base)
	53.154-P5	Non-Engaging	-Multiunit WP - (Ti-Base)
	53.155-P5	Non-Engaging	-Multiunit WP - (AURUMBase®)



	REF	ENGAGEMENT	ON TI-Base COMPATIBILITIES
STANDARD	53.100-P10	Non-Engaging	-All Non-Engaging Ti-Base and AURUMBase® except for the above groups
	53.200-P10	Engaging	-All Engaging Ti-Base and AURUMBase® except for the above groups

TRANSFER

DESS ref. 17.XXX



TECHNICAL INFORMATION

- Stainless Steel AISI 303
- Polymer (DESSLoc® only)
- CE: Class I
- FDA: Class I



FEATURES

- Pure Switch® concept
- Flat face to avoid rotation in the impression tray
- 1mm depth marks for clinical accuracy
- Two screws included - same screw design as OEM



CLINICAL BENEFITS

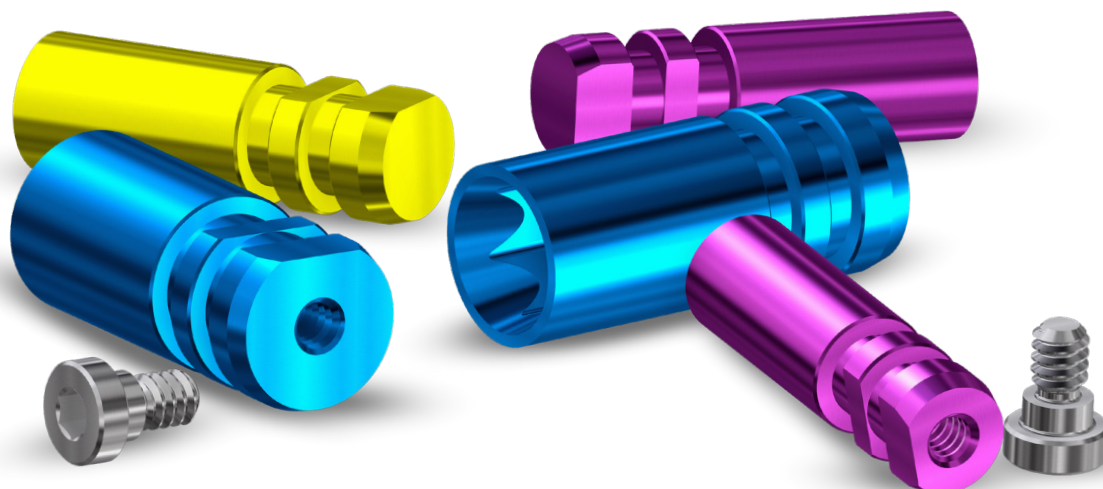
- Same transfer for open and closed tray

33 SYSTEMS

	NOBELACTIVE® & NOBELREPLACE® CC		BIOHORIZONS® INTERNAL
	NOBEL REPLACE SELECT™		BIOHORIZONS® EXTERNAL
	NOBEL BRÄNEMARK®		MIS® SEVEN
	3i OSSEOTITE®		MIS® C1
	3i CERTAIN®		MIS® V3
	STRAUMANN® SOFT TISSUE LEVEL & synOcta®		MEGAGEN AnyRidge®
	STRAUMANN® BONE LEVEL		ANTHOGYR AXIOM®
	STRAUMANN® BLX		MEDENTIS ICX®
	NEODENT® GRAND MORSE		GLOBALD IN-KONE®
	ZIMMER SCREW-VENT®		DENTIUM SUPERLINE™ & IMPLANTUM®
	ASTRA TECH IMPLANT SYSTEM™ EV		BEGO SEMADOS®
	ASTRA TECH OSSEOSPEED™		BIOTECH KONTACT®
	DENTSPLY FRIADENT XIVE®		BTI®
	DENTSPLY ANKYLOS® C/X		PHIBO® TSH®
	OSSTEM® TS		MULTI-UNIT CONNECTION
	CAMLOG®		DESSLoc®
	CONELOG®		

ANALOGUE AND DIGITAL ANALOGUE

DESS ref. 14.XXX - 14.XXX/D



TECHNICAL INFORMATION

- Non anodized: AISI 303
- Anodized: titanium Grade V ELI 23 – colour coded
- Digital analogue: threaded bottom for 3D model - includes 1,27mm hexagonal head screw
- CE: Class I
- FDA: Class I



FEATURES

- Pure Switch® concept
- Analogue: Self-locking for stability in stone models
- Digital Analogue: for 3D models
- Colour matching with the branding system and their specific platforms



LAB BENEFITS

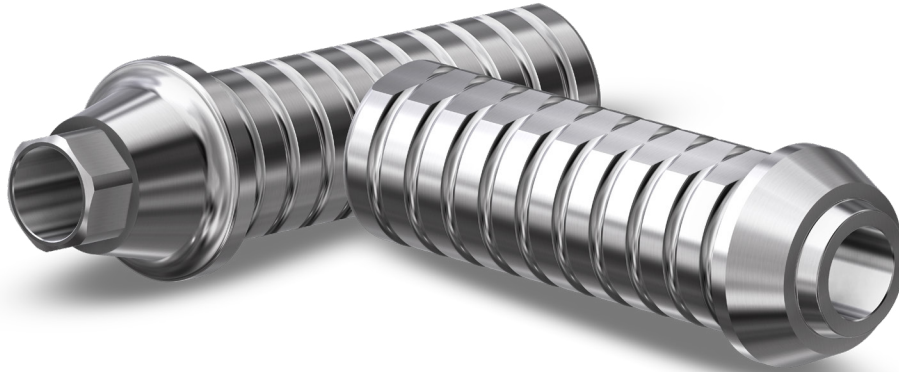
- Standard and digital analogues are reusable in 3D-printed models
- Less risk of mix-up due to colour coding

33 SYSTEMS

	NOBELACTIVE® & NOBELREPLACE® CC		BIOHORIZONS® INTERNAL
	NOBEL REPLACE SELECT™		BIOHORIZONS® EXTERNAL
	NOBEL BRÅNEMARK®		MIS® SEVEN
	3i OSSEOTITE®		MIS® C1
	3i CERTAIN®		MIS® V3
	STRAUMANN® SOFT TISSUE LEVEL & synOcta®		MEGAGEN AnyRidge®
	STRAUMANN® BONE LEVEL		ANTHOGYR AXIOM®
	STRAUMANN® BLX		MEDENTIS ICX®
	NEODENT® GRAND MORSE		GLOBALD IN-KONE®
	ZIMMER SCREW-VENT®		DENTIUM SUPERLINE™ & IMPLANTUM®
	ASTRA TECH IMPLANT SYSTEM™ EV		BEGO SEMADOS®
	ASTRA TECH OSSEOSPEED™		BIOTECH KONTACT®
	DENTSPLY FRIADENT XIVE®		BTI®
	DENTSPLY ANKYLOS® C/X		PHIBO® TSH®
	OSSTEM® TS		MULTI-UNIT CONNECTION
	CAMLOG®		DESSLoc®
	CONELOG®		

TEMPORARY ABUTMENT

DESS ref. 24.XXX non-engaging - 25.XXX engaging



TECHNICAL INFORMATION

- Titanium Grade V ELI 23
- PEEK (Multi-Unit connection only)
- Surface grooves
- Two versions: engaging and non-engaging
- 10,5mm cementing surface height
- CE: Class IIb
- FDA: Class II



FEATURES

- Pure Switch® concept
- Indicated for immediate loads
- Screw included - same screw design as OEM

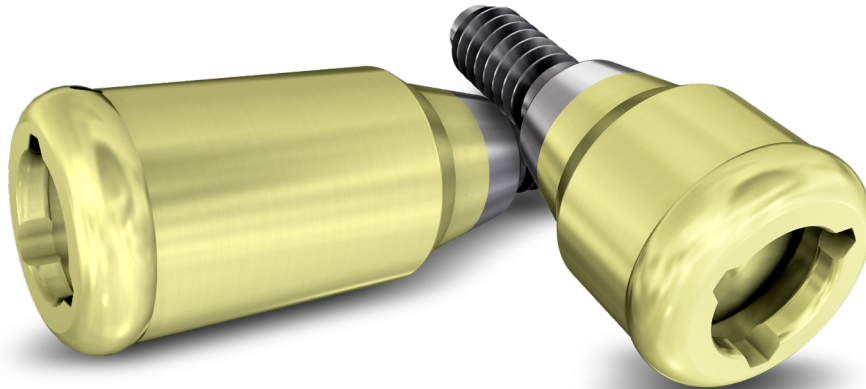


CLINICAL BENEFITS

- Surface grooves allow the embedding of any restoration material
- Customisable depending on each case

17 SYSTEMS

	NOBELACTIVE® & NOBELREPLACE® CC		ASTRA TECH OSSEOSPEED™
	NOBEL REPLACE SELECT™		DENTSPLY FRIADENT XIVE®
	NOBEL BRÅNEMARK®		DENTSPLY ANKYLOS® C/X
	3i OSSEOTITE®		OSSTEM® TS
	3i CERTAIN®		CAMLOG®
	STRAUMANN® SOFT TISSUE LEVEL & synOcta®		BIOHORIZONS® EXTERNAL
	STRAUMANN® BONE LEVEL		MIS® SEVEN
	ZIMMER SCREW-VENT®		MULTI-UNIT CONNECTION
	ASTRA TECH IMPLANT SYSTEM™ EV		



TECHNICAL INFORMATION

- Titanium Grade V ELI 23
- PerioCoat®
- CE: Class IIb
- FDA: Class II



FEATURES

- Pure Switch® concept
- Multiple gingival heights options: 1-6mm depending on the system
- Placement carrier included to facilitate placement and handling*
- DESSLoc® tool available: more control and torque transmission
- DESSLoc® insertion & removal tool: facilitates changing of retention inserts
- Two insert retention kits: from 20° to 40° of max divergence

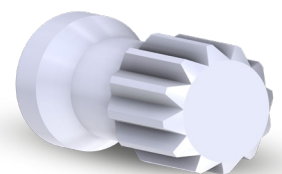


CLINICAL BENEFITS

- Abutment for removable overdenture prosthetics
- PerioCoat® for better strenght, less plaque retention and gingival inflammation

16 SYSTEMS

- NOBELACTIVE® & NOBELREPLACE® CC
- NOBEL REPLACE SELECT™
- NOBEL BRÄNEMARK®
- 3i OSSEOTITE®
- 3i CERTAIN®
- STRAUMANN® SOFT TISSUE LEVEL & synOcta®
- STRAUMANN® BONE LEVEL
- ZIMMER SCREW-VENT®
- ASTRA TECH IMPLANT SYSTEM™ EV
- ASTRA TECH OSSEOSPEED™
- DENTSPLY FRIADENT XIVE®
- DENTSPLY ANKYLOS® C/X
- CAMLOG®
- BIOHORIZONS® INTERNAL
- MIS® SEVEN
- MULTI-UNIT CONNECTION



*Carrier

MULTI-UNIT ABUTMENTS

DESS ref. straight 40.XXX - 17° 41.XXX - 30° 43.XXX



TECHNICAL INFORMATION

- Titanium Grade V ELI 23
- DLC coated screws ¹
- Three versions: straight (non-engaging), 17° and 30° angulations (engaging)
- CE: Class IIb
- FDA: Class II



FEATURES

- Pure Switch® concept
- Same cone design for all DESS Multi-Unit, same shape as Nobel®
- Multiple gingival heights options: 1-5mm depending on the system
- Screw included - same screw design as OEM
- Placement carriers included for straight and angled versions*
- Fully shaped connection geometry
- Higher material strength and fully threaded areas
- Higher screwing torque up to 35Ncm ²



CLINICAL BENEFITS

- Ideal for ALL-on-X: standardised prosthetic platform for screw-retained prosthetics
- Available prosthetic assortment for Multi-Unit
- The higher torque avoids screw loosening

14 SYSTEMS

- NOBELACTIVE® & NOBELREPLACE® CC
- NOBEL REPLACE SELECT™
- NOBEL BRÄNEMARK®
- 3i OSSEOTITE®
- STRAUMANN® BONE LEVEL
- STRAUMANN® BLX
- NEODENT® GRAND MORSE
- ZIMMER SCREW-VENT®
- ASTRA TECH IMPLANT SYSTEM™ EV
- ASTRA TECH OSSEOSPEED™
- OSSTEM® TS
- BIOHORIZONS® INTERNAL
- MIS® SEVEN
- DENTIUM SUPERLINE™ & IMPLANTIUM®



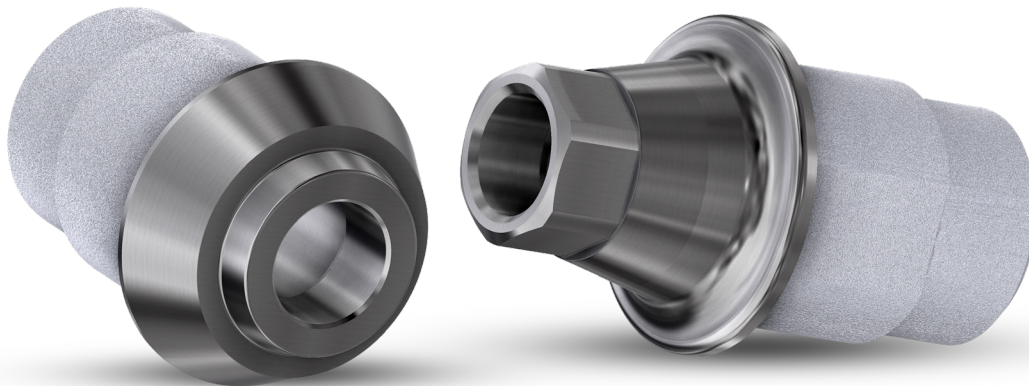
*Carriers

¹ on Nobel compatibilities

² depending on the compatibility

Ti-Base

DESS ref. 15.XXX non-engaging - 16.XXX engaging



TECHNICAL INFORMATION

- Titanium Grade V ELI 23
- SelectGrip® surface treatment
- Two versions: engaging and non-engaging
- Typically a cementing surface of 52,70mm²
- Shaft with parallel walls
- Shaft height of 4,2mm
- Combined with our free libraries for Exocad®, 3Shape®, Dental wings® and Blenderfordental®
- CE: Class IIb
- FDA: Class II



FEATURES

- Pure Switch® concept
- Multiple gingival heights options: 0,3-3,5mm depending on the system
- Screw included - same screw design as OEM
- Flat face to avoid rotation on engaging version; maximises Zr thickness

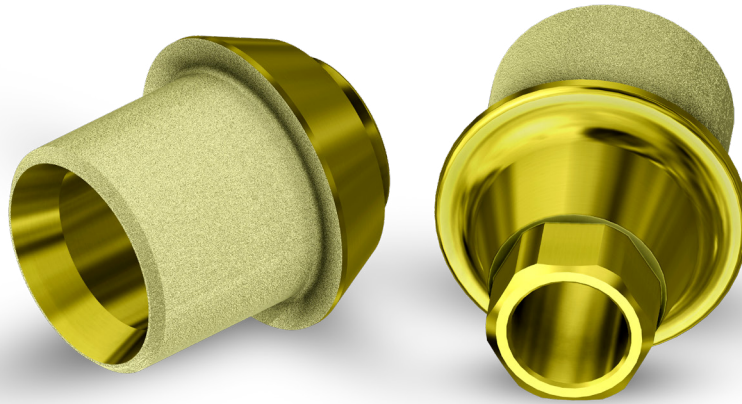


CLINICAL BENEFITS

- For single and multiple cemented restorations
- SelectGrip® surface treatment: 5x better cement retention

31 SYSTEMS

	NOBELACTIVE® & NOBELREPLACE® CC		CONELOG®
	NOBEL REPLACE SELECT™		BIOHORIZONS® INTERNAL
	NOBEL BRANEMARK®		BIOHORIZONS® EXTERNAL
	3i OSSEOTITE®		MIS® SEVEN
	3i CERTAIN®		MIS® C1
	STRAUMANN® SOFT TISSUE LEVEL & synOcta®		MIS® V3
	STRAUMANN® BONE LEVEL		MEGAGEN AnyRidge®
	STRAUMANN® BLX		ANTHOGRYR AXIOM®
	NEODENT® GRAND MORSE		MEDENTIS ICX®
	ZIMMER SCREW-VENT®		GLOBALD IN-KONE®
	ASTRA TECH IMPLANT SYSTEM™ EV		DENTIUM SUPERLINE™ & IMPLANTIUM®
	ASTRA TECH OSSEOSPEED™		BEGO SEMADOS®
	DENTSPLY FRIADENT XIVE®		BIOTECH CONTACT®
	DENTSPLY ANKYLOS® C/X		BTI®
	OSSTEM® TS		MULTI-UNIT CONNECTION
	CAMLOG®		



TECHNICAL INFORMATION

- Titanium Grade V ELI 23
- SelectGrip® surface treatment
- Gold anodized surface
- Two versions: engaging and non-engaging
- Up to 25° angulation in 360° rotation for optimal results of the ASC (Angulated Screw Channel)
- Typically a cementing surface of 37,83mm²
- Shaft height of 3,0mm
- Combined with our free libraries for Exocad®, 3Shape®, Dental wings® and Blenderfordental®
- CE: Class IIb
- FDA: Class II



FEATURES

- Pure Switch® concept
- Torx® ball based screw socket
- Torx® screw included - same screw design as OEM
- Full recommended torque even at maximum angulation
- Short shaft to increase translucency and aesthetics
- Flat face to avoid rotation on engaging version; maximises Zr thickness

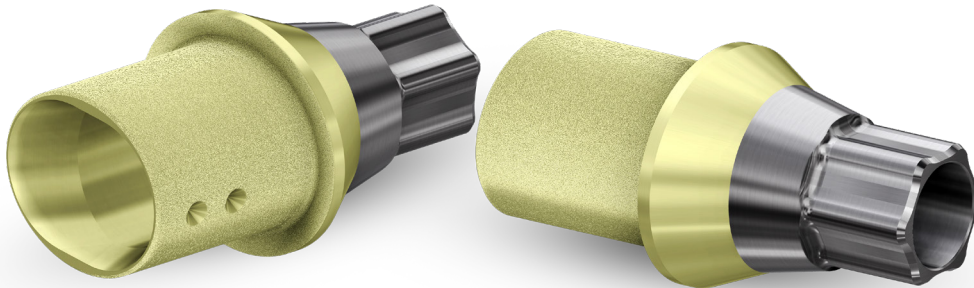


CLINICAL BENEFITS

- Angulated screw channel solution
- Short shaft to give 360° angular freedom up to 25°
- SelectGrip® surface treatment: 5x better cement retention
- Torx® ball screw: optimal torque even at maximum angulation
- Warmer gingival tone in case of gingival retraction
- Parallel walls to increase strength and bond retention

23 SYSTEMS

	NOBELACTIVE® & NOBELREPLACE® CC		DENTSPLY FRIADENT XIVE®
	NOBEL REPLACE SELECT™		OSSTEM® TS
	NOBEL BRÅNEMARK®		CAMLOG®
	3i OSSEOTITE®		CONELOG®
	3i CERTAIN®		BIOHORIZONS INTERNAL
	STRAUMANN® SOFT TISSUE LEVEL & synOcta®		MIS® SEVEN
	STRAUMANN® BONE LEVEL		MEGAGEN AnyRidge®
	STRAUMANN® BLX		MEDENTIS ICX®
	NEODENT® GRAND MORSE		DENTIUM SUPERLINE™ & IMPLANTUM®
	ZIMMER SCREW-VENT®		PHIBO® TSH®
	ASTRA TECH IMPLANT SYSTEM™ EV		MULTI-UNIT CONNECTION
	ASTRA TECH OSSEOSPEED™		



TECHNICAL INFORMATION

- Titanium Grade V ELI 23
- PerioCoat® and SelectGrip® surface treatment
- Elliptic design with minimized footprint
- Especially developed for narrow implants (3.0-3.3-3.5)
- Up to 20° bidirectional angulation of the ASC (Angulated Screw Channel)
- Typically a cementing surface 31,55mm²
- Shaft height of 3,0mm
- Combined with our free libraries for Exocad®, 3Shape®, Dental wings® and Blenderfordental®
- CE: Class IIb
- FDA: Class II



FEATURES







- Pure Switch® concept
- Torx® ball based screw socket
- Torx® screw included - same screw design as OEM
- Two orientations for clinical adaptation: corner and flat
- Optimal aesthetic screw channel exit

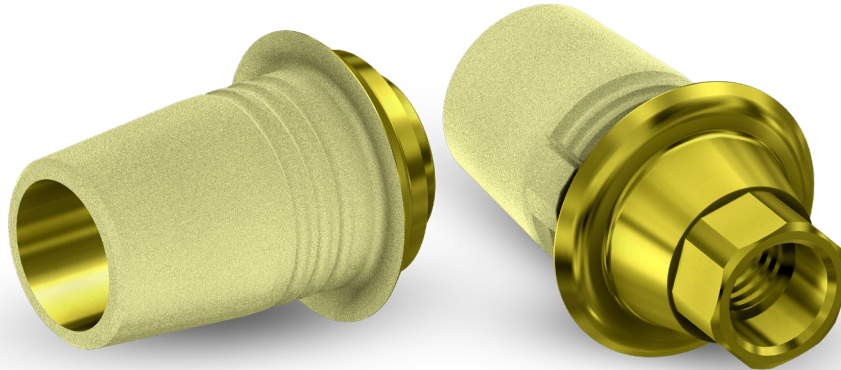


CLINICAL BENEFITS

- 22% width reduction compared to regular Ti-Base
- SelectGrip® surface treatment: 5x better cement retention
- PerioCoat®: increases the strength of the abutment
- Torx® ball screw: optimal torque even at maximum angulation
- Warmer gingival tone

6 SYSTEMS

-  NOBELACTIVE® & NOBELREPLACE® CC
-  STRAUMANN® SOFT TISSUE LEVEL & synOcta®
-  STRAUMANN® BONE LEVEL
-  ZIMMER SCREW-VENT®
-  ASTRA TECH IMPLANT SYSTEM™ EV
-  BIOHORIZONS® INTERNAL



TECHNICAL INFORMATION

- Titanium Grade V ELI 23
- Gold anodized surface
- SelectGrip® surface treatment
- Two versions: engaging and non-engaging
- Typically a cementing surface of 56,60mm²
- Shaft height of 4,68mm
- Combined with our free libraries for Exocad®, 3Shape®, Dental wings® and Blenderfordental®
- CE: Class IIb
- FDA: Class II



FEATURES
















- Pure Switch® concept
- Multiple gingival heights options: 0,3-3,0mm depending on the system
- Screw included - same screw design as OEM
- Same Sirona Ti-Base design and shape



CLINICAL BENEFITS

- SelectGrip® surface treatment: 5x better cement retention
- Warmer gingival tone in case of gingival retraction

15 SYSTEMS

-  NOBELACTIVE® & NOBELREPLACE® CC
-  NOBEL REPLACE SELECT™
-  NOBEL BRÅNEMARK®
-  3i OSSEOTITE®
-  3i CERTAIN®
-  STRAUMANN® SOFT TISSUE LEVEL & synOcta®
-  STRAUMANN® BONE LEVEL
-  ZIMMER SCREW-VENT®
-  ASTRA TECH IMPLANT SYSTEM™ EV
-  ASTRA TECH OSSEOSPEED™
-  DENTSPLY FRIADENT XIVE®
-  DENTSPLY ANKYLOS® C/X
-  OSSTEM® TS
-  CONELOG®
-  BIOHORIZONS® INTERNAL

ABUTMENTS

DESS ref. straight 13.XXX - 15° 22.XXX - 25° 23.XXX



TECHNICAL INFORMATION

- Titanium Grade V ELI 23
- SelectGrip® surface treatment
- Three versions: straight, 15° and 25° angulations
- Engaging version
- Shaft height of 7mm
- CE: Class IIb
- FDA: Class II



FEATURES

- Screw included - same screw design as OEM
- Laser marked to identify the platform



CLINICAL BENEFITS

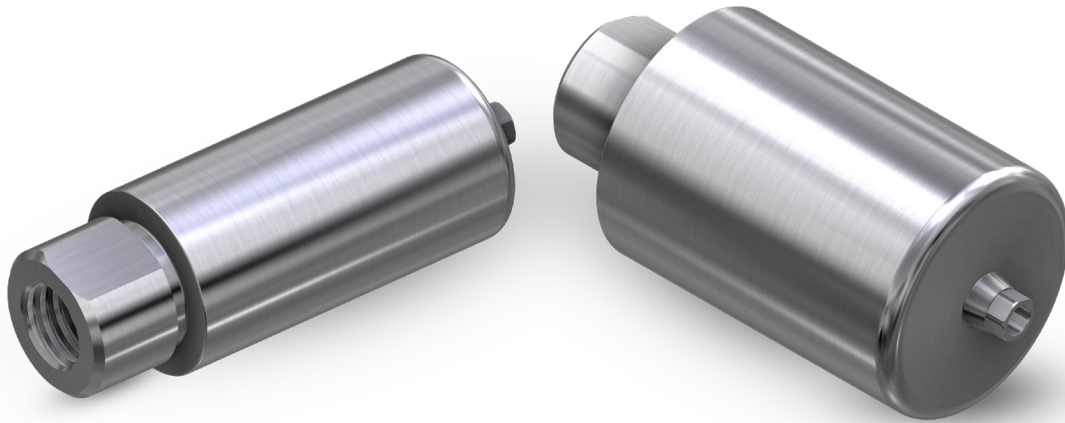
- SelectGrip® surface treatment: 5x better cement retention

13 SYSTEMS

- NOBELACTIVE® & NOBELREPLACE® CC
- NOBEL REPLACE SELECT™
- NOBEL BRÄNEMARK®
- 3i OSSEOTITE®
- 3i CERTAIN®
- STRAUMANN® SOFT TISSUE LEVEL & synOcta®
- STRAUMANN® BONE LEVEL
- ZIMMER SCREW-VENT®
- ASTRA TECH OSSEOSPEED™
- DENTSPLY FRIADENT XIVE®
- DENTSPLY ANKYLOS® C/X
- BIOHORIZONS® EXTERNAL
- MIS® SEVEN

PRE-MILLED BLANK

DESS ref. ø10mm 61.XXX - ø14mm 62.XXX



TECHNICAL INFORMATION

- Titanium Grade V ELI 23
- 2 diameter options: ø10mm and ø14mm
- Engaging version
- Two versions of ASC (Angulated Screw Channel)
Premilled: corner and flat
- Starting gingival transition of 0,3mm
- Total millable length of 20mm
- Combined with our free libraries for Exocad®, 3Shape® and Dental wings®
- CE: Class IIb
- FDA: Class II



FEATURES

- Pure Switch® concept
- Screw included - same screw design as OEM
- “Pull down and lock” holding system for stable clamping



CLINICAL BENEFITS

- Premilled connection with DESS precision

28 SYSTEMS

	NOBELACTIVE® & NOBELREPLACE® CC		OSSTEM® TS
	NOBEL REPLACE SELECT™		CAMLOG®
	NOBEL BRÅNEMARK®		CONOLOG®
	3i OSSEOTITE®		BIOHORIZONS INTERNAL
	3i CERTAIN®		BIOHORIZONS EXTERNAL
	STRAUMANN® SOFT TISSUE LEVEL & synOcta®		MIS® SEVEN
	STRAUMANN® BONE LEVEL		MIS® C1
	STRAUMANN® BLX		MIS® V3
	NEODENT® GRAND MORSE		MEGAGEN AnyRidge®
	ZIMMER SCREW-VENT®		ANTHOGRYR AXIOM®
	ASTRA TECH IMPLANT SYSTEM™ EV		MEDENTIS ICX®
	ASTRA TECH OSSEOSPEED™		BEGO SEMADOS®
	DENTSPLY FRIADENT XIVE®		BIOTECH KONTACT®
	DENTSPLY ANKYLOS® C/X		BTI®

All DESS products are manufactured according to ISO 9001 and ISO 13485 with CE marking for all products
Class IIb

All DESS® AURUMBase® screws and screwdrivers are based on the standard ISO 10664
3i® and 3i Certain®, Miniplant®, MicroMiniplant™ and Osseotite® are registered trademarks of 3i Implant Innovations,
USA

ASTRA TECH™, OsseoSpeed™, ANKYLOS® C/X, XiVE®, FRIADENT®, ASTRATECH implant system™ EV and
UniAbutment®

Cerec® are registered trademarks of DENTSPLY SIRONA Implants

BioHorizons® is a registered trademark of BioHorizons, INC.

Brånemark System®, NobelReplace® and Replace Select™, NobelActive™, NobelReplace® CC, NobelSpeedy™ and
Multi-unit® are registered trademarks of Nobel Biocare AB,

Neodent®, Grand Morse®, Straumann® and synOcta® are registered trademarks of Straumann Holding AG,
Switzerland

MIS® is a registered trademark of MIS Implant Technologies Ltd.

Zimmer Screw-Vent® and SwissPlus® are registered trademarks of Zimmer Dental INC, USA

Dyna® is a registered trademark of Dyna Dental Engineering BV

Locator® is a registered trademark of ZEST IP Holdings

Camlog® and Conelog® are registered trademarks of CAMLOG Biotechnologies AG

Megagen® is a registered trademark of MEGAGEN IMPLANT CO. LTD

TORX® is a trademark of ACUMENT INTELLECTUAL PROPERTIES, LLC

Bego Semados® is a registered trademark of BEGO GmbH & Co. KG

Anthogyr® is a registered trademark of Anthogyr SAS

Medentis ICX® is a registered trademark of medentis medical GmbH

Osstem®, Hiossen® is a registered trademark of OSSTEM IMPLANT CO. LTD

Dentium® is a trademark of Dentium Co. Ltd.

GOBALD® is a trademark of Global D SASU.

Biotech Kontakt® is a trademark Biotech Dental SAS.

BTI® is a trademark BTI Biotechnology Institute.

PHIBO® is a trademark PHIBO Dental Solutions S.L.

DESS products can be used only by licensed dentists, physicians and labs.

Please refer ever to the instructions of use available on the website

www.dessdental.com

or supplied with the product.

Some products may not be available in your country. Some of the products are cleared for US and Canada.

Please contact your local distributor for more details.





www.dessdental.com